



FULTON
LABS

400 N. Aberdeen
Fulton Market
Chicago

400 N. Aberdeen, Fulton Market, Chicago

Advanced labs on every floor.
Energy on every block.
Science and tech talent in every direction.

FULTON LABS. WHERE SCIENCE IS ALIVE.

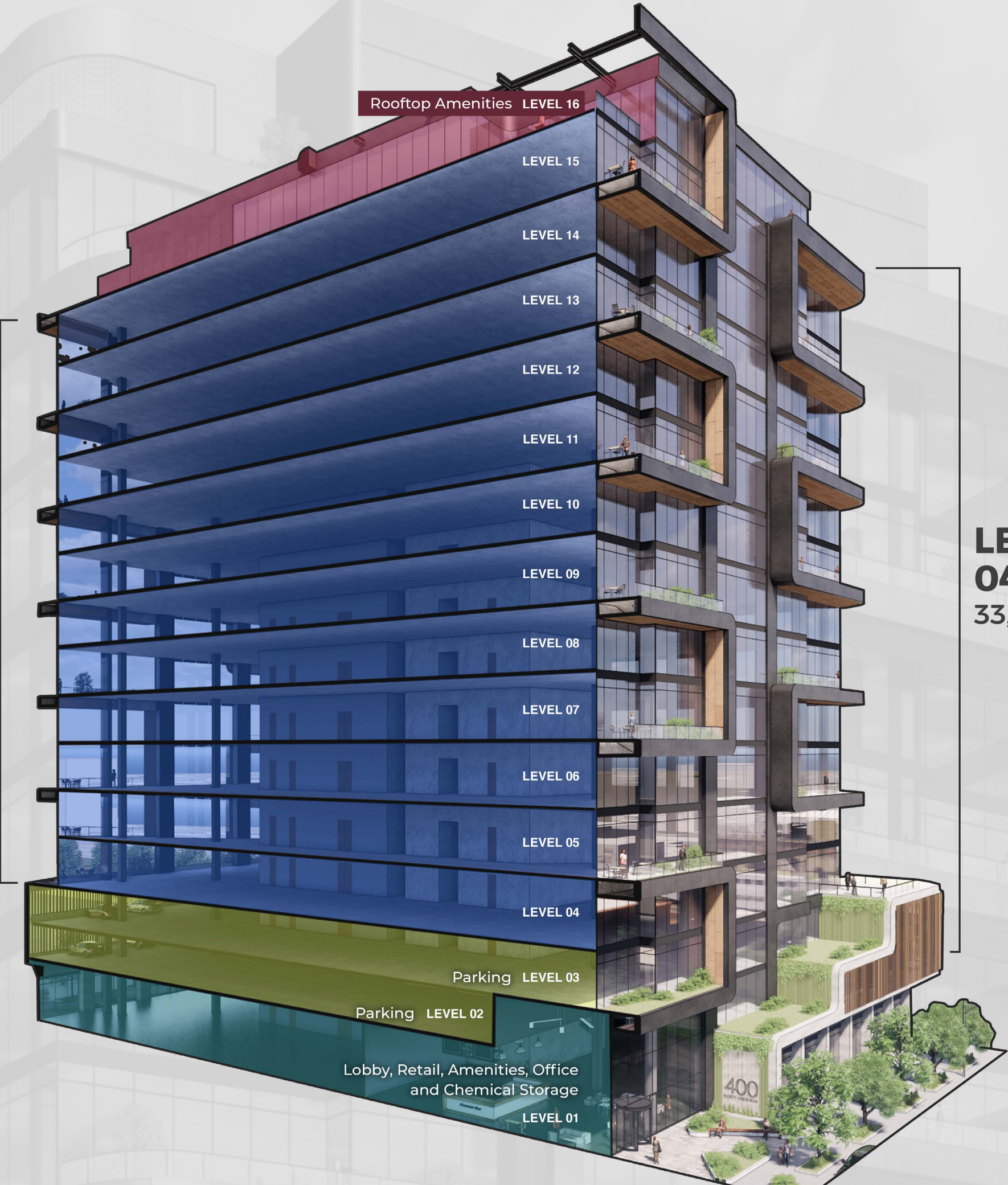


FULTON LABS AVAILABILITY

Total building space:
423,454 RSF

15' floor-to-floor
height on floors
04-14

LEVEL 01:
15,935 RSF



Level 01

15,935 RSF

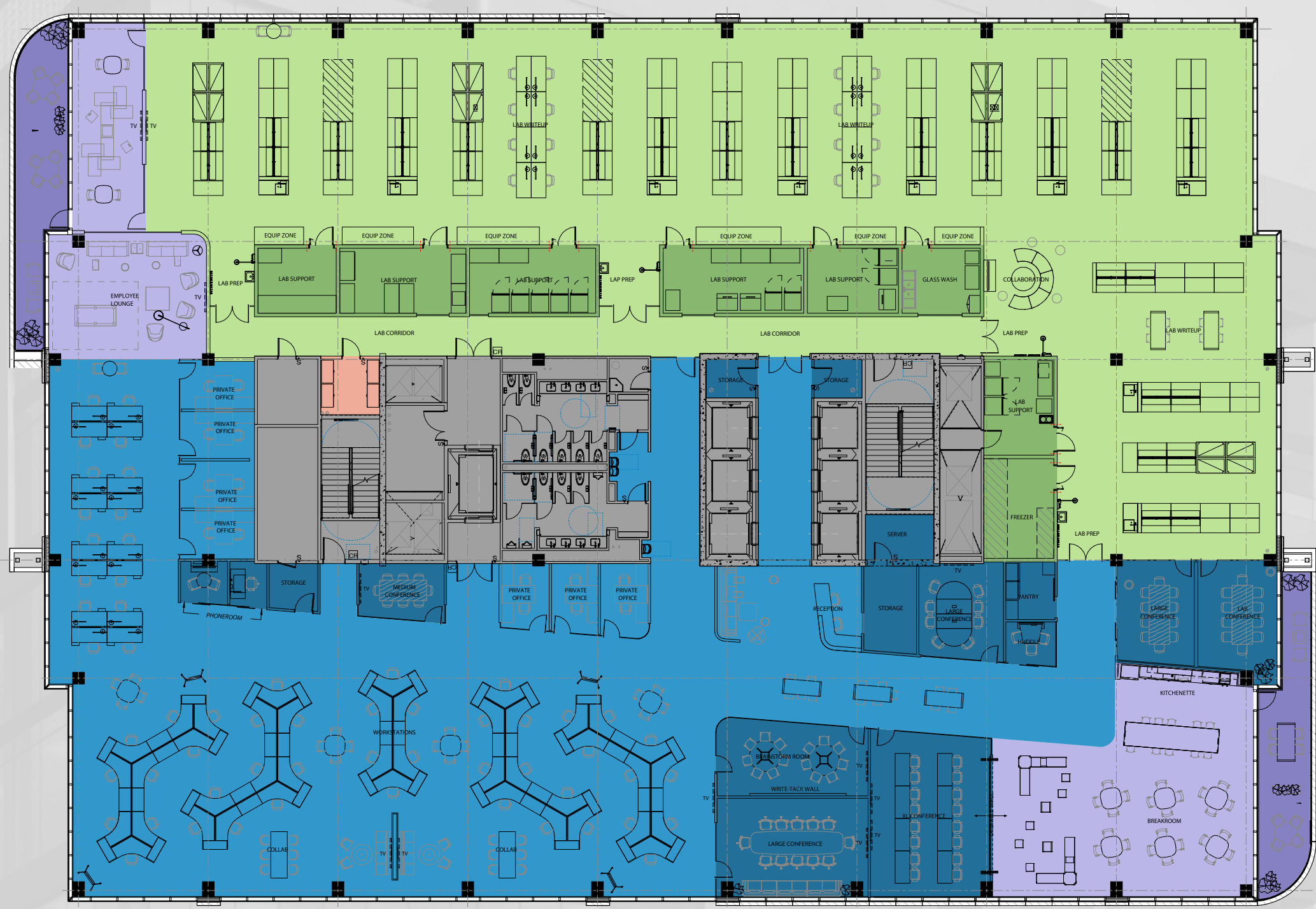
- Fitness
- Lobby
- Labratory Support
- Retail
- Building Support
- Office Support



Single tenant

33,914 RSF

- Amenity
- Balcony
- Laboratory
- Laboratory Support
- Office
- Office Support
- Chemical Storage
- Core



West Tenant 17,804 RSF
East Tenant 16,110 RSF

- Amenity
- Balcony
- Laboratory
- Laboratory Support
- Office
- Office Support
- Chemical Storage
- Core



Two tenants - lab lite

West Tenant 17,804 RSF
East Tenant 16,110 RSF

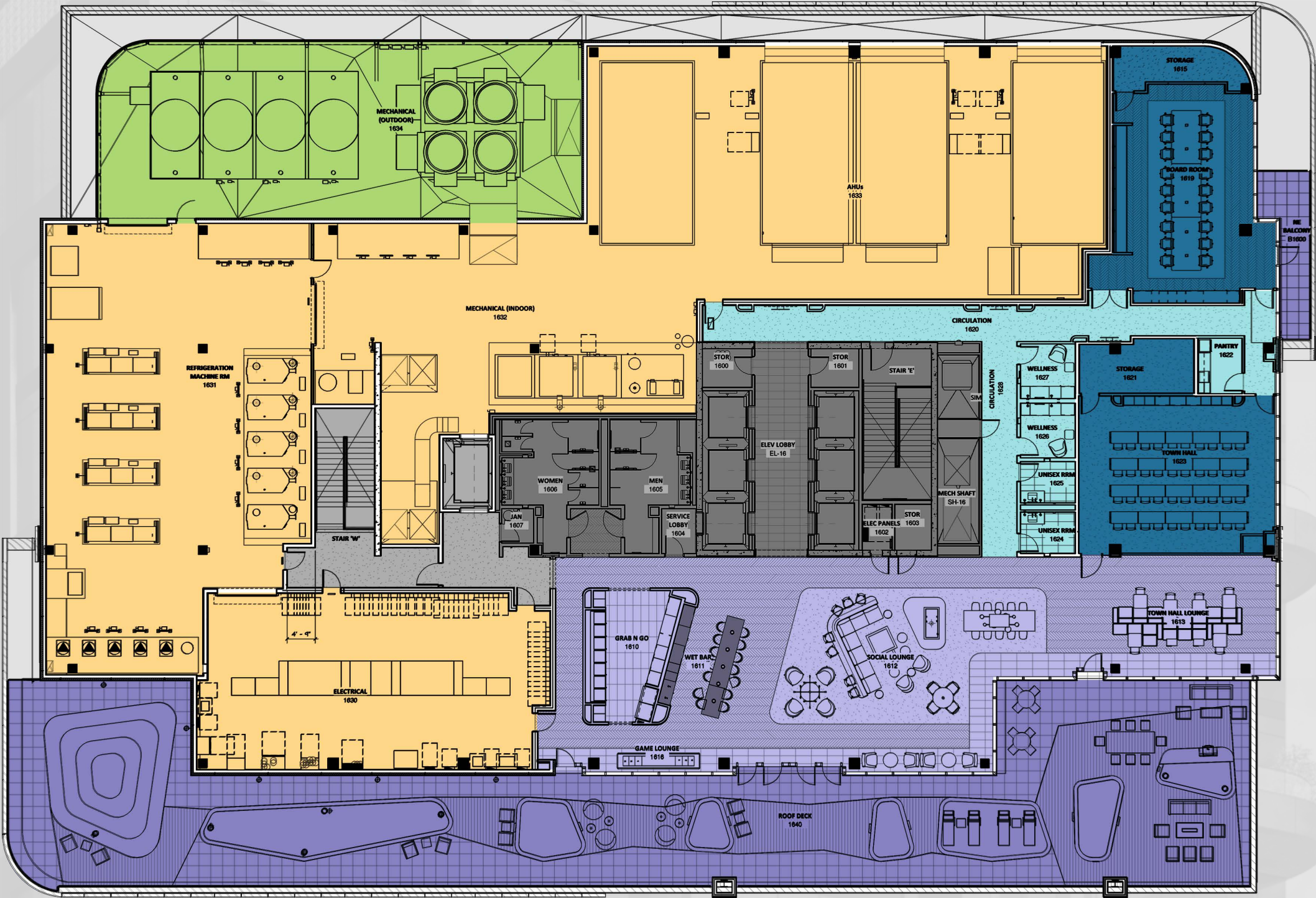
- Amenity
- Balcony
- Laboratory
- Laboratory Support
- Office
- Office Support
- Chemical Storage
- Core



Level 16

12,303 USF

- Amenity
- Amenity Support
- Balcony
- Mechanical Space
- Mechanical Space - Outdoor
- Office Support
- Core





FULTON
LABS

400 N. Aberdeen
Fulton Market
Chicago